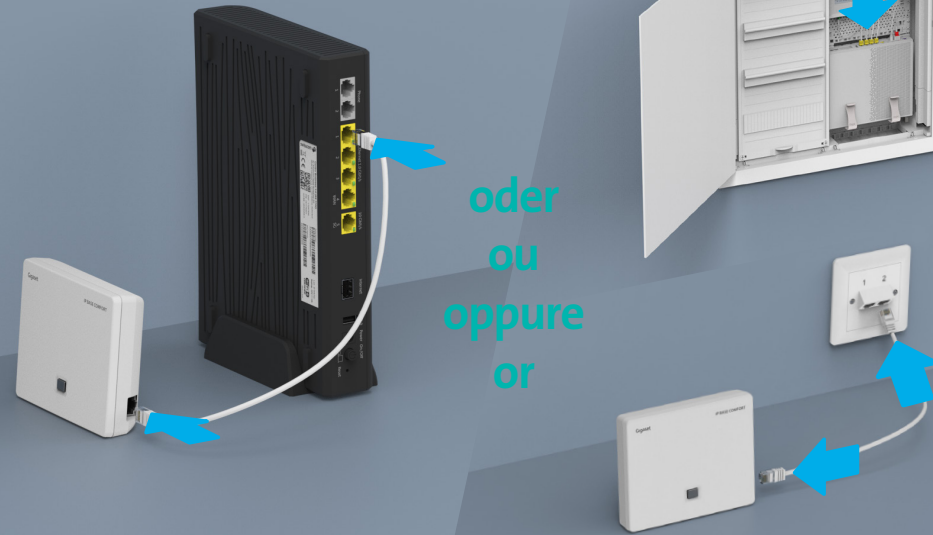




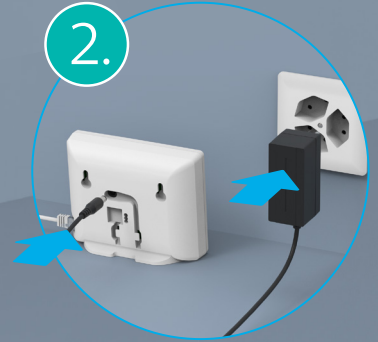
Gigaset IP BASE COMFORT

1.



oder
ou
oppure
or

2.

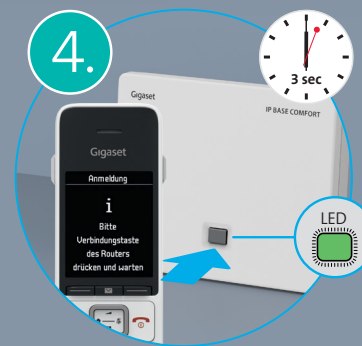


3.



Warten, bis Basisstation grün leuchtet.
Attendez que la station de base devienne verte.
Attendere che il LED della base dect diventi verde.
Wait until the base station turns green.

4.



Taste für 3 Sek. gedrückt halten. Die LED blinkt grün. HD-Phone in den Anmeldemodus setzen.
Ensuite, appuyez sur le bouton et maintenez-le enfoncé pendant 3 secondes. La LED clignote en vert. Activez le mode d'enregistrement du HD-Phone.
Tenere premuto il tasto per 3 secondi. Il LED lampeggia verde. Attivare la modalità di registrazione dell' HD-Phone.
Press and hold the button for 3 seconds. The LED is flashing green. Now activate the pairing mode of the HD-Phone.

5.



Das Gerät ist betriebsbereit.
L'appareil est prêt à l'emploi.
Il dispositivo è pronto per l'uso.
The device is ready for operation.

B2C-TSP-HDE NR114 08/23